

ATyS

Automatic Transfer Switch

125 A TO 3200 A

SWITCH TO INNOVATION



IEC 60947-6-1
Class PC
AC-31B In 830A
Icu 415kV 50/60Hz
Iimp 10kV
for 75kA at Icu 830A gG

CE

IEC 60947-6
AC-31B In 830A
Icu 415kV 50/60Hz

www.socomec.com

socomec
ATyS 6m 830A
Automatic changeover switch
IEC 60947-6-1

M
230V~
50/60Hz

SOCOMEC: leading the field in changeover switching

Disconnection, breaking, control... Since 1922 SOCOMEC has gained a wealth of experience in these fields. The excellent worldwide reputation of its products both in industrial and commercial LV electrical installations is due to their high quality and reliability.

The back-to-back manual changeover switch, invented by SOCOMEC and now available in a compact motorised version, has become the world reference in power switching.

ATyS: intelligent integration of control and electronic protection

A leader in electrical control and protection, SOCOMEC is breaking new ground by combining its expertise in this field with its breaking systems. The result: an innovative technological concept for intelligent switching of energy supplies.

ATyS: a practical response to IEC and EN 60947-6-1 switching requirements

The new ATyS switching range has been designed, tested and proven according to the criteria in the international standard IEC 60947-6-1.

Its compliance with this standard guarantees a quality product which meets all the requirements of automatic transfer.



SOCOMEC can also provide:

> Other manual and automatic changeover switches



> Static Load Transfer Modules



> UPS for critical loads



The "plug and play" changeover switch

The normal / backup function is operational as soon as the power cables are connected !

CHANGEOVER

Two mechanically-interlocked switches.

OPERATION

A motorised unit and manual backup switch.

MONITORING AND CONTROL

Integrated electronic relay.

CONFIGURATION AND DISPLAY

Ergonomic, upgradeable interface.

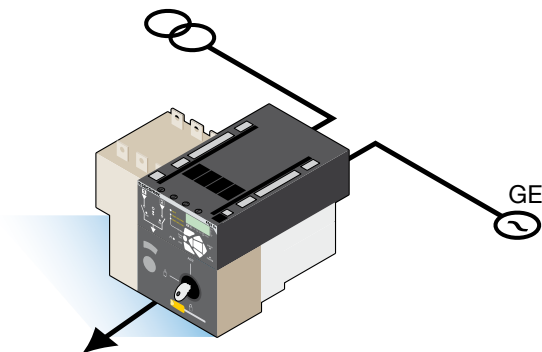
INSTALLATION

Compact integrated solutions facilitate installation and connections.



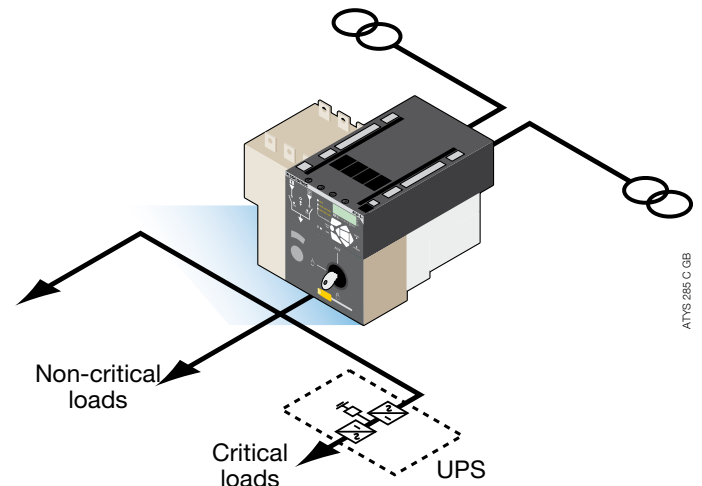
SECURE SWITCHING FOR ALL YOUR APPLICATIONS

> Network / Generator set permutation



ATyS 295 C

> Network / Network permutation

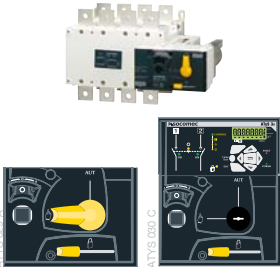


ATyS 295 C GB

A complete range for both industrial and commercial low voltage applications

> ATyS 3

A motorised changeover switch for connection to a power supply

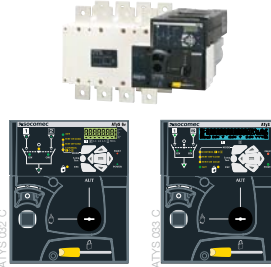


ATyS 3s**

ATyS 3e

> ATyS 6

A changeover system with an autonomous power source (ATS*)



ATyS 6e

ATyS 6m

> ATyS controller

A universal relay for power source switching



ATyS C30

ATyS C40

| | ATyS 3s** | ATyS 3e | ATyS 6e | ATyS 6m | ATyS C30 | ATyS C40 |
|--|-----------|---------|---------|---------|----------|----------|
| MOTORIZED CHANGEOVER | | | | | | |
| Manual backup switch | • | • | • | • | | |
| Can be padlocked in 3 positions | • | • | • | • | | |
| Auto / Manual mode selector | • | • | • | • | | |
| Auxiliary contacts (status indicator) | • | • | • | • | | |
| Two power sources | | • | • | • | | |
| Uses the present source | | • | • | • | | |
| NORMAL / BACKUP CONTROL RELAY | | | | | | |
| Single phase voltage measurement on network [1] | | | • | • | | • |
| Three phases voltage measurement on network [1] | | | • | • | | • |
| Single phase voltage measurement on network [2] | | | • | • | | • |
| Three phase voltage measurement on network [2] | | | • | • | | • |
| Can be used to start / stop a generator set | | | • | • | • | |
| Can be used to start / stop two generator sets | | | • | • | • | • |
| Frequency sensing on network [1] and [2] | | | • | • | • | • |
| Loss of mains timer, return of mains timer, dead band stay in 0 position and generator set cooling down timers | | | • | • | • | • |
| Remote start / stop the automatique mode | | | • | • | • | • |
| Test sequences | | | • | • | • | • |
| Fault relay | | | • | • | | |
| Electrical controls for position | | | • | • | | |
| Measurement of I, P, Q, S, PF, neutral current calculation | | | • | • | | |
| Large backlit display | | | | • | | |
| OPTIONS | | | | | | |
| Optional communication module | | • | • | • | | |
| 2 Inputs / 2 Outputs optional module*** | | • | • | • | | |
| ATyS D10 and ATyS D20 interfaces connection | | | • | • | • | |
| Double power supply | • | | | | | |

* Automatic Transfer Switch.

** only < 2000 A.

*** 2 inputs / 2 outputs as standard on ATyS C30.

Please contact us for full functional specification.

FITS WHERE YOU WANT IT

> Back plate mounting



APPL 082 B

ATyS products can be mounted on the back plate of the cabinet with optional connection to remote interfaces with controlled access.

> Flush mounting



APPL 082 B

ATyS products can be mounted to enable direct external access to the command and display interface.

Socomec *worldwide*

IN EUROPE

BELGIUM

SOCOMECH BELGIUM
B - 1190 Brussel
Tel. +32 (0)2 340 02 30 - Fax +32 (0)2 346 28 99
info.scp.be@socomec.com

FRANCE

SOCOMECH
F - 94132 Fontenay-sous-Bois Cedex
Tel. +33 (0)1 45 14 63 30 - Fax +33 (0)1 45 14 63 38
info.scp.fr@socomec.com

GERMANY

SOCOMECH GmbH
D - 76275 Ettlingen
Tel. +49 (0)7243 65 29 2 0 - Fax +49 (0)7243 65 29 2 13
info.scp.de@socomec.com

ITALY

SOCOMECH Elettrotecnica s.r.l.
I - 20098 San Giuliano Milanese (MI)
Tel. +39 02 9849821 - Fax +39 02 98243310
info.scp.it@socomec.com

SPAIN

SOCOMECH ELECTRO, S.L.
E - 08310 Argentona (Barcelona)
Tel. +34 93 741 60 67 - Fax. +34 93 757 49 52
info.scp.es@socomec.com

THE NETHERLANDS

SOCOMECH B.V.
NL - 3991 CD Houten
Tel. +31 (0)30 760 0901 - Fax +31 (0)30 637 2166
info.scp.nl@socomec.com

THE UNITED KINGDOM

SOCOMECH Ltd
Hitchin Hertfordshire SG4 0TY
Tel. +44 (0)1462 440033 - Fax +44 (0)1462 431143
info.scp.uk@socomec.com

IN ASIA

NORTH EAST ASIA

SOCOMECH CHINA
CN - 200030 P.R.C Shanghai - China
Tel. +86 (0)21 5298 9555 - Fax +86 (0)21 6228 3468
info.scp.cn@socomec.com

SOUTH EAST ASIA & PACIFIC

SOCOMECH SWITCHING AND PROTECTION
UBI TECHPARK - 408569 Singapore
Tel. +65 65 07 94 90 - Fax +65 65 47 86 93
info.scp.sg@socomec.com

SOUTH ASIA

SOCOMECH INDIA
122001 Gurgaon, Haryana - India
Tel. +91 124 4562 700 - Fax +91 124 4562 738
info.scp.in@socomec.com

IN MIDDLE EAST

UNITED ARAB EMIRATES

SOCOMECH Middle East
Dubai, U.A.E.
Tel. +971 (0) 4 29 98 441 - Fax +971 (0)4 29 98 449
info.scp.ae@socomec.com

IN NORTH AMERICA

USA, CANADA & MEXICO

SOCOMECH Inc
Cambridge, MA 02142 USA
Tel. +1 617 245 0447 - Fax +1 617 245 0437
info.scp.us@socomec.com

HEAD OFFICE

SOCOMECH GROUP

S.A. SOCOMECH capital 11 149 200 €
R.C.S. Strasbourg B 548 500 149
B.P. 60010 - 1, rue de Westhouse
F-67235 Benfeld Cedex - FRANCE

INTERNATIONAL SALES DEPARTMENT

SOCOMECH

1, rue de Westhouse - B.P. 60010
F - 67235 Benfeld Cedex - FRANCE
Tel. +33 (0)3 88 57 41 41 - Fax +33 (0)3 88 74 08 00
info.scp.isd@socomec.com

www.socomec.com

Non contractual document. © 2011, Socomec SA. All rights reserved.

